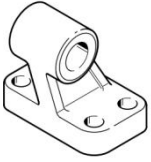


## LN Clevis foot

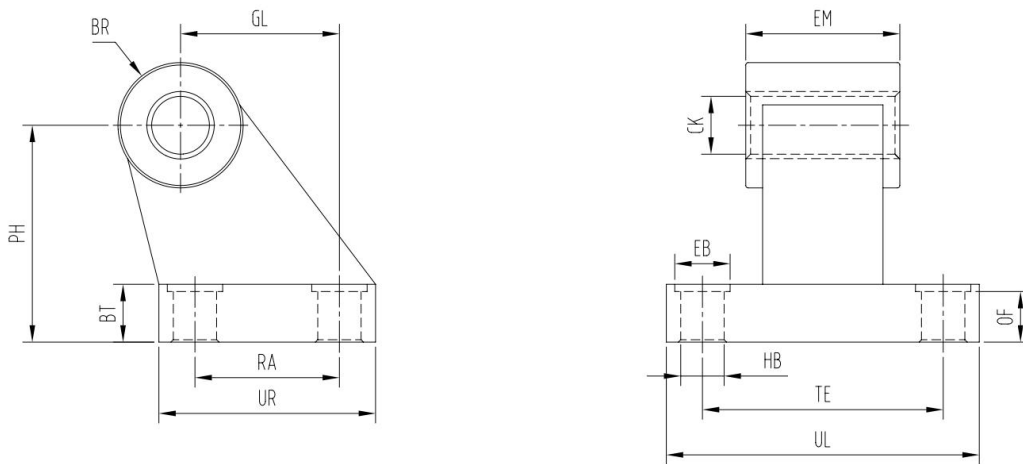


Material:

LN-32 ...50: High alloy steel

LN-63 ...320: Spheroidal graphite cast iron

Type: LN-32/40/50/63/80/100/125/160/200/250/320



## Dimensions and Type

For diameter $\phi$	BR	BT	CK $\phi$	EB $\phi$	EM	GL	HB $\phi$	OF	PH	RA	TE	UL	UR	Type
32	10	8	10 H9	-	25.8 -0.4	21	5.5	-	32	18	38	51	31	LN-32
40	11	10	12 H9	-	27.8 -0.4	24	5.5	-	36	22	41	54	35	LN-40
50	12	12	12 H9	-	31.8 -0.4	33	6.6	-	45	30	50	65	45	LN-50
63	14.5	12	16 H8	15	40 c11	37	6.6	10.8	50	35	52	67	51	LN-63
80	14.5	14	16 H8	20	50 c11	47	9	12.7	63	40	66	86	60	LN-80
100	18.5	15	20 H8	20	60 c11	55	9	13.7	71	50	76	96	70	LN-100
125	22	20	25 H8	20	70 c11	70	11	18.6	90	60	94	124	90	LN-125
160	31	25	30 H8	20	90 c11	97	14	23.6	115	88	118	156	126	LN-160
200	31	30	30 H8	26	90 c11	105	16	28.5	135	90	122	162	130	LN-200
250	38.5	35	40 H8	33	110 c11	128	22	33.5	165	110	150	200	160	LN-250
320	44.5	40	45 H8	40	120 c11	150	26	38.5	200	122	170	234	186	LN-320